



CBSE Affiliation No.
3430369

DELHI PUBLIC SCHOOL

CHAS, BOKARO

SUMMER VACATION ACTIVITIES AND ASSIGNMENTS

(SESSION : 2023-24)

Class - X

INSTRUCTIONS:

- In general, all the questions are to be answered in the classwork notebooks.
- Projects and activities are to be done as per the instructions given along with the questions.
- Summer Vacation assignment will be the part of Internal Assessment.

English

1. Read the below given English unseen passage and answer the following questions.

The choices we make on a daily basis—wearing a seatbelt, lifting heavy objects correctly or purposely staying out of any dangerous situation—can either ensure our safety or bring about potentially harmful circumstances.

You and I need to make a decision that we are going to get our lives in order. Exercising self-control, self-discipline and establishing boundaries and borders in our lives are some of the most important things we can do. A life without discipline is one that's filled with carelessness.

We can think it's kind of exciting to live life on the edge. We like the image of "Yeah! That's me! Living on the edge! Woo-hoo!" It's become a popular way to look at life. But if you see, even highways have lines, which provide margins for our safety while we're driving. If we go over one side, we'll go into the ditch. If we cross over the line in the middle, we could get killed. And we like those lines because they help to keep us safe. Sometimes we don't even realize how lines help to keep us safe.

I'm not proud of this, but for the first 20 years of my life at work, I ignored my limits. I felt horrible, physically, most of the time. I used to tell myself "I know I have limits and that I've reached them, but I'm going to ignore them and see if or how long I can get by with it." I ran to doctors, trying to make myself feel better through pills, vitamins, natural stuff and anything I could get my hands on. Some of the doctors would tell me, "It's just stress." That just made me mad. I thought stress meant you don't like what you do or can't handle life, and I love what I do. But I kept pushing myself, traveling, doing speaking engagements and so on— simply exhausting myself.

Finally, I understood I was living an unsustainable life and needed to make some changes in my outlook and lifestyle.

You and I don't have to be like everyone else or keep up with anyone else. Each of us needs to be exactly the way we are, and we don't have to apologize for it. We're not all alike and we need to find a comfort zone in which we can enjoy our lives instead of making ourselves sick with an overload of stress and pressure.

On the basis of understanding of the passage, answer the following questions.

I) Which of the characteristics are apt about the writer in the following context: "I know I have limits and that I've reached them, but I'm going to ignore them and see if or how long I can get by with it." ?

i) Negligent

ii) Indecisive

iii) Spontaneous

iv) Reckless

v) Purposeless

vi) Patient

a) ii and v

b) iii and vi

c) i and iv

d) ii and iii

- II) The reason why living on the edge has become popular, is because of the
 a) Constant need for something different.
 b) Population being much younger.
 c) Exhausting effort to make changes.
 d) Strong tendency to stay within our limits.
- III) The phrase “potentially harmful circumstances” refers to circumstances that can
 a) certainly be dangerous. b) be fairly dangerous.
 c) be possibly dangerous. d) seldom be dangerous.
- IV) Choose the option that correctly states the two meanings of ‘outlook’, as used in the passage.
 i. A person’s evaluation of life
 ii. A person’s experiences in life
 iii. A person’s point of view towards life
 iv. A person’s regrets in life
 v. A person’s general attitude to life
 a) i and iv b) ii and iii c) iii and v d) iv and v
- V) Choose the option that best captures the central idea of the passage from the given quotes.
 i. It’s all about quality of life and finding a happy balance between work and friends.
 ii. To go beyond is as wrong as to fall short.
 iii. Life is like riding a bicycle. To keep your balance you must keep moving.
 iv. Balance is not something you find, it’s something you create.
 a) Option i b) Option ii c) Option iii d) Option iv

2. You are Sakshi/Saksham living in Vellore. Your family plans to go for a vacation to Udaipur this vacation. Write a letter to the Front Office Manager of a five-star hotel seeking information about the types of rooms, tariffs, facilities, availability etc in their hotel.
3. Answer the following question in your own words. (5 marks each)
 (a) What made Hari Singh change his heart? Do you agree that everyone needs a second chance to amend their mistakes?
 (b) How does Robert Frost describe nature in his poem? Describe how he sees them as a friend to the mankind with reference to the poems you have read.

हिंदी

1. निम्नलिखित गद्यांशों को पढ़िए और नीचे दिये गए प्रश्नों के उत्तर लिखिए—
 हालदार साहब को हर पन्द्रहवें दिन कम्पनी के काम के सिलसिले में उस कस्बे से गुजरना पड़ता था। कस्बा बहुत बड़ा नहीं था। जिसे पक्का मकान कहा जा सके वैसे कुछ ही मकान और जिसे बाजार कहा जा सके वैसे एक ही बाजार था। कस्बे में लड़कों का एक स्कूल, लड़कियों का एक स्कूल, एक सीमेंट का छोटा-सा कारखाना, दो ओपन एयर सिनेमाघर और एक नगरपालिका भी थी। नगरपालिका थी तो कुछ-न-कुछ करती भी रहती थी। कभी कोई सड़क पक्की करवा दी, कभी कुछ पेशाबघर बनवा दिए, कभी कबूतरों की छतरी बनवा दी तो कभी कवि सम्मेलन करवा दिया। इसी नगरपालिका के किसी उत्साही बोर्ड या प्रशासनिक

अधिकारी ने एक बार 'शहर' के मुख्य बाजार के मुख्य चौराहे पर नेताजी सुभाषचन्द्र बोस की एक संगमरमर की प्रतिमा लगवा दी।

- क. कस्बे में प्रशासनिक विकास का कार्य कराने की जिम्मेदारी किसकी थी?
ख. कस्बे में क्या-क्या था?

2. निम्नलिखित वाक्यों को मिश्र वाक्य में बदलिए –

- क. पुस्तकें खरीदने के लिए वह बाजार गई।
ख. दुकान पर सजी मिठाइयाँ देखकर बच्चे के मुँह में पानी आ गया।
ग. निराला जी द्वारा रचित कविता सभी को पसंद आई।
घ. गार्ड द्वारा हरी झंडी हिलाते ही गाड़ी चल पड़ी।

3. निम्नलिखित वाक्यों को संयुक्त वाक्य में बदलिए—

- क. शहर जाने पर श्यामू मलेरिया से पीड़ित हो गया।
ख. मोबाइल फोन झपटने का अपराधी होने से उसे सजा हुई।
ग. परिश्रम से कमाए गए धन को सोच-समझकर खर्च करना चाहिए।
घ. आज तुम घर पर रहकर जानवरों की देख-रेख का काम करो।

4. नई शिक्षा नीति-2020 की विशेषताओं पर 100-120 शब्दों में अनुच्छेद लिखिए।

5. गर्मी की छुट्टी में आप जिन स्थानों का भ्रमण करेंगे उनमें किन्हीं दो से संबंधित यात्रा वृत्तांत चित्र सहित लिखिए।

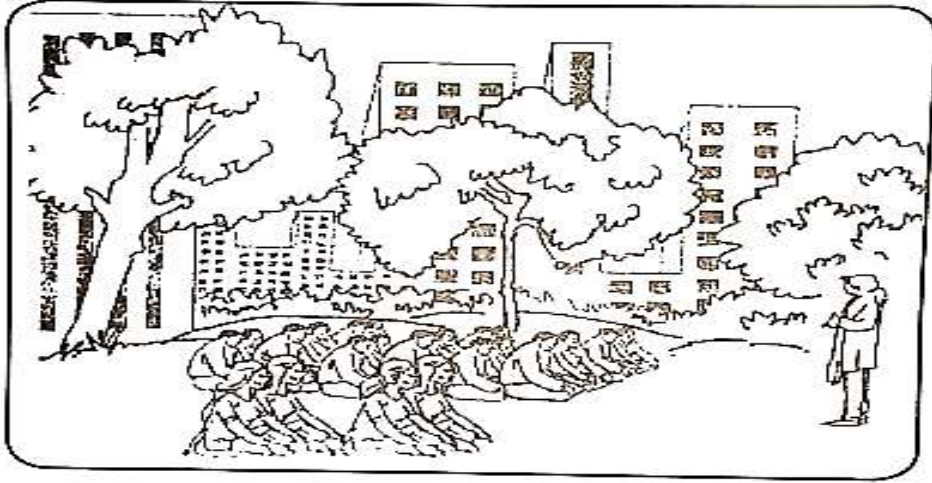
6. आप मालती अपार्टमेंट, सेक्टर-6 बोकारो के निवासी हैं। आप चाहते हैं कि लोग गर्मी में पानी की बर्बादी कम से कम प्रयोग करें। पानी की बर्बादी से होने वाली परेशानियों से अवगत कराते हुए निम्नलिखित प्रारूप के आधार पर नवभारत टाइम्स के संपादक को पत्र लिखिए।

सेवा में	
संपादक महोदय	
.....	← समाचार पत्र का नाम
.....	
.....	← प्रकाशित होने का पता
विषय :	
.....	← संबोधन
.....	
.....	← विषय के प्रति ध्यानाकर्षण
.....	
.....	
.....	← मुख्य विषय वस्तु
.....	
.....	
.....	← समापन
धन्यवाद	
भवदीय/आपका	
.....	← नाम
.....	
.....	← पता
.....	
.....	← दिनांक

- 1 एकमुद्देश्य लक्ष्यीकृत्य बहूनां जनानाम् ऐक्यभावनया कार्यकरणमेव संहतिः संगठनं वाऽभिधीयते। एकता मनुष्ये शक्तिमादधाति। एकतयैव देशः समाजो लोकश्च उन्नतिपथं प्राप्नुवन्ति। यस्मिन् देशे समाजे वा एकताऽस्ति, स एव देशः सकललोकसम्माननीयो भवति। संसारे एकतायाः अतीवावश्यकता वर्तते। विशेषतः कलियुगेऽस्मिन् संहतिः कार्यसाधिका। यतो हि वर्तमाने काले यादृशं सामाजिकं राष्ट्रियं च जीवनमस्ति, तस्य निर्माणाय रक्षणाय च संगठनं परमावश्यकम्। अद्यत्वे संसारे यस्मिन् राष्ट्र एकतायाः अभावोऽस्ति, तत् राष्ट्रं सद्य एव परतन्त्रतापाशबद्धं भवति। अस्माकं देशस्य पारतन्त्र्यम् अनया एव एकतया सहयोगेन वा विच्छिन्नं जातम्। महात्मना गान्धिमहोदयेन तथैवान्यैश्च देशभक्तैः भारतीयसमाजे सर्वत्र एकत्वभावानोदयेन पराधीनतापाशस्य छेदनं विहितम्। अधुना लोकतन्त्रात्मकमस्माकं राष्ट्र संघटनबलेनैव स्वोन्नतिं विदधाति।

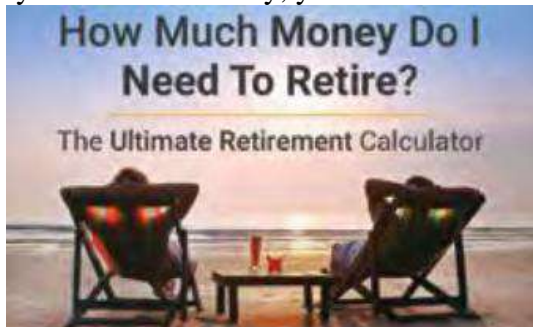
प्रदत्तगद्यान्शं पठित्वा अधोलिखितान् प्रश्नान् स्वशब्देषु लिखत (20-30शब्देषु)।

- 1 कदा कथं च सकललोकसम्माननीयो भवति?
 - 2 एकताभावनया किं कर्तुं शक्यते?
 - 3 अस्माकं देशः कदा कथं च परतन्त्रः अभवत्?
 - 4 एकतायाः महत्त्वं किम्?
 - 5 कलियुगेऽस्मिन् सामाजिकं राष्ट्रियं च जीवनं कथम् अस्ति?
- 2 प्रदत्तं चित्रं दृष्ट्वा दशवाक्यानि लिखत।



- 3 अस्माकं जीवने पुस्तकानां महत्त्वं किम्? स्वशब्देषु संस्कृतेन लिखत (200)
- 4 अस्माकं जीवने सङ्गीतस्य उपयोगिता का? स्वशब्देषु संस्कृतेन लिखत (200)

1. **Financial Planning:** Planning for retirement starts with thinking about your retirement goals and how long you have to meet them. Then you need to look at the types of retirement accounts that can help you raise the money to fund your future. As you save that money, you have to invest it to enable it to grow.



A recently retired couple needs Rs 120,000 per year to supplement their Social Security. They have Rs 1,500,000 to invest to obtain this income. They have decided on two investment options: AA bonds yielding 10% per annum and a fixed deposit yielding 5%.

- (i) How much should be invested in each to realize exactly Rs 120,000?
 (ii) If, after 2 years, the couple requires Rs 140,000 per year in income, how should they reallocate their investment to achieve the new amount?
2. Prove that $n^2 - n$ is divisible by 2 for every positive integer n .
3. If p is prime number, then prove that \sqrt{p} is an irrational.
4. Mercury, Venus, and Earth revolve around the Sun approximately once every 3 months, 7 months, and 12 months, respectively. If the planets begin lined up, what is the minimum number of months required for them to be aligned again? (Assume that the planets lie roughly in the same plane.)



5. If α and β are zeroes and the quadratic polynomial $f(x) = x^2 - x - 4$, then find the value of $\frac{1}{\alpha} + \frac{1}{\beta} - \alpha\beta$.
6. Assertion: $(2 - \sqrt{3})$ is one zero of the quadratic polynomial then other zero will be $(2 + \sqrt{3})$.
 Reason: Irrational zeros (roots) always occurs in pairs.
 (a) Both assertion (A) and reason (R) are true and reason (R) is the correct explanation of assertion (A).
 (b) Both assertion (A) and reason (R) are true but reason (R) is not the correct explanation of assertion (A).
 (c) Assertion (A) is true but reason (R) is false.
 (d) Assertion (A) is false but reason (R) is true.
7. Quadratic polynomial $2x^2 - 3x + 1$ has zeroes as α and β . Now form a quadratic polynomial whose zeroes are 3α and 3β .
8. Solve graphically: $2x - 3y + 13 = 0$; $3x - 2y + 12 = 0$

9. A two digit number is four times the sum of the digits. It also equal to 3 times the product of digits. Find the number.
10. Lavanya throws a ball upwards, from a rooftop, which is 20 m above from ground. It will reach a maximum height and then fall back to the ground. The height of the ball from the ground at time t is h , which is given by $h = -4t^2 + 16t + 20$.
- What is the height reached by the ball after 1 second?
 - What is the maximum height reached by the ball?
 - How long will the ball take to hit the ground?
 - What are the two possible times to reach the ball at the same height of 32 m?
 - Where is the ball after 5 seconds?
11. Nutrition: Shalvi wants to use milk and orange juice to increase the amount of calcium and vitamin A in her daily diet. An ounce of milk contains 38 milligrams of calcium and 56 micrograms of vitamin A. An ounce of orange juice contains 5 milligrams of calcium and 60 micrograms of vitamin A.



How many ounces of milk and orange juice should she drink each day to provide exactly 550 milligrams of calcium and 1,200 micrograms of vitamin A?

12. Riya has a lawn with a flowerbed and grass land. The grass land is in the shape of rectangle while flowerbed is in the shape of square. The length of the grassland is found to be 3 m more than twice the length of the flowerbed. Total area of the whole lawn is 1260 m^2 .



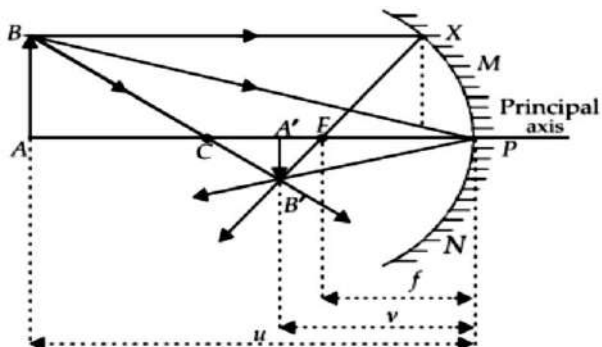
- If the length of the flowerbed is x m then what is the total length of the lawn?
- What will be the perimeter of the whole field?
- What is the value of x if the area of total lawn is 1260 m^2 ?
- What is the area of grassland?
- What is the ratio of area of flowerbed to area of grassland?

Science

PHYSICS

- Write two rules of the new Cartesian sign conventions for spherical mirrors.
 - Trace the path of the reflected ray by drawing a figure if it passes from centre of curvature of a concave mirror.
- Define the principal focus of a concave mirror.
- Which mirror is used by dentists?

4. What are the advantages and disadvantages of using convex mirror for seeing traffic at the rear?
5. Define the following terms used in the reflection of light
 - (a) Incident ray
 - (b) Normal
 - (c) Reflected ray
 - (d) Angle of incidence
 - (e) Angle of reflection
6.
 - a) State the laws of reflection of light.
 - b) The magnification produced by a plane mirror is +1. What does this mean?
7.
 - a) What is lateral inversion? Explain by giving suitable example.
 - b) How would the letter 'F' appear in front of plane mirror?



8.

Mirror formula is a relation between object distance (u), image distance (v) and focal length (f) of a spherical mirror. It can be written as $1/u + 1/v = 1/f = 2/R$ where R is the radius of curvature of the mirror. This formula is valid in all situations for all spherical mirrors for all positions of the object. Consider the case, in which a mirror forms a real image of height 4 cm of an object of height 1 cm placed 20 cm away from the mirror.

- (a) What is the mirror formula?
- (b) Write the mirror formula.
- (c) The focal length of mirror is

OR

(c) At what distance must an object be placed from mirror in order that a real image double its size may be obtained?

9. An object of height 5 cm is placed in front of a spherical mirror of radius of curvature 40 cm in such a way that its image size is $3/5$ times the object. Find the focal length of the mirror. Also, draw the ray diagram in support of the answer.

CHEMISTRY

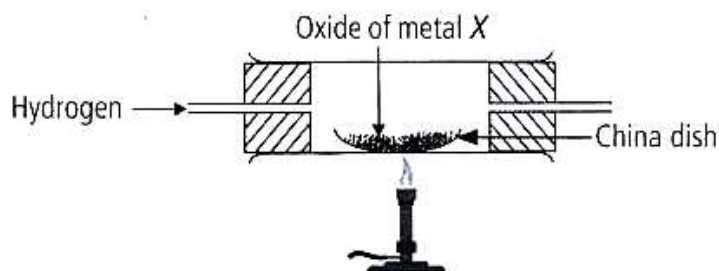
Case Study Question:

1. Read the following and answer any four questions.

Reaction in which one element takes place of another element in a compound, are known as displacement reactions. In general, more reactive elements displaces a less reactive element from its compound. In all single displacement reactions, only one element displaces another element from its compound. The single displacement reactions are, however, written as just displacement reactions. The displacement reaction between iron (III) oxide and powdered aluminium produces so much heat that iron metal obtained is in molten form.

- i) Copper displaces which of the following metals from its salt solution?
 - a) $ZnSO_4$
 - b) $FeSO_4$
 - c) $AgNO_3$
 - d) $NiSO_4$
- ii) When zinc reacts with dilute sulphuric acid, the gas evolved is
 - a) red in colour and have a sweet smelling
 - b) green in colour and have a foul smell
 - c) colourless, odourless and burns with a pop sound
 - d) colourless, pungent smelling and burns with a pop sound

- iii) When dry hydrogen is passed over a heated oxide of metal X using the apparatus shown below, a reddish-brown residue is obtained.



The reddish-brown residue could be

- a) copper b) lead c) silver d) zinc
- iv) Which of the following reactions is a displacement reaction?
- a) $\text{CaO} + \text{H}_2\text{O} \rightarrow \text{Ca}(\text{OH})_2$ b) $\text{MgCO}_3 \rightarrow \text{Mg} + \text{CO}_2$
- c) $\text{Mg} + \text{CuSO}_4 \rightarrow \text{MgSO}_4 + \text{Cu}$ d) $\text{H}_2 + \text{Cl}_2 \rightarrow 2\text{HCl}$
- v) When dilute hydrochloric acid is added to granulated zinc placed in a test tube, the observation made is
- a) the surface of the metal turns shining
- b) the reaction mixture turns milky
- c) greenish yellow gas is evolved
- d) the colourless and odourless gas evolves with a pop sound.

2. Assertion (A) : Brown fumes are produced when lead nitrate is heated.
Reason (R) : Nitrogen dioxide gas is produced as a by product due to the decomposition of lead nitrate.

- (a) Both A and R are true and R is the correct explanation of A.
(b) Both A and R are true but R is not the correct explanation of A.
(c) A is true but R is false.
(d) A is false but R is true.

3. Assertion (A): Iron articles are painted so as to prevent them from rusting.
Reason (R): When the surface of iron is coated with paint, its surface does not come in contact with oxygen and moisture therefore rusting does not take place.

- (a) Both A and R are true and R is the correct explanation of A.
(b) Both A and R are true but R is not the correct explanation of A.
(c) A is true but R is false.
(d) A is false but R is true.

4. What is a redox reaction?

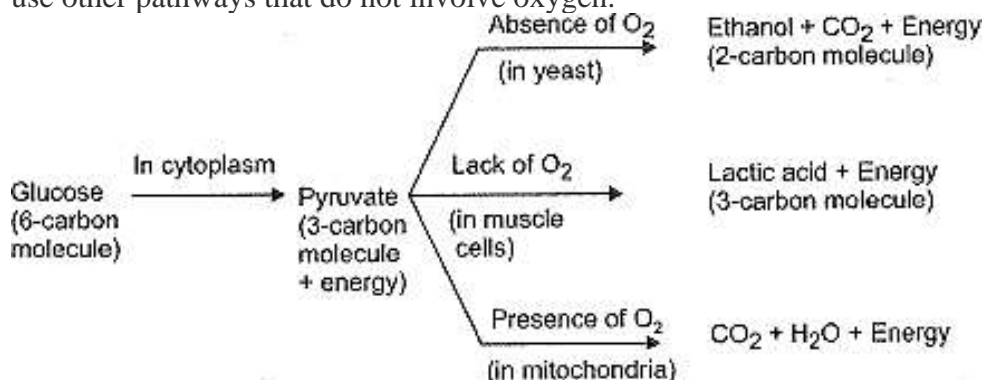
Identify the substances that are oxidised and the substances that are reduced in the following reactions.

- (a) $\text{Fe}_2\text{O}_3 + 2\text{Al} \rightarrow \text{Al}_2\text{O}_3 + 2\text{Fe}$
- (b) $2\text{PbO} + \text{C} \rightarrow 2\text{Pb} + \text{CO}_2$

BIOLOGY

(I) Case Based Questions:-

The food material taken in during the process of nutrition is used in cells to provide energy for various life processes. Diverse organisms do this in different ways – some use oxygen to break-down glucose completely into carbon dioxide and water, some use other pathways that do not involve oxygen.

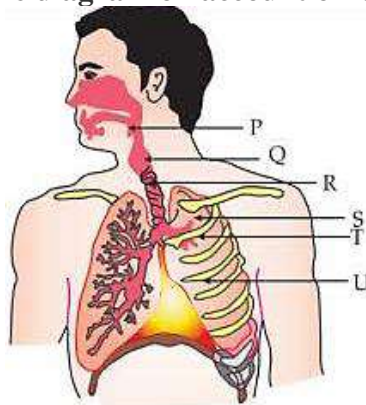


In all cases, the first step is the break-down of glucose, a six-carbon molecule, into a three-carbon molecule called pyruvate. This process takes place in the cytoplasm.

- What is anaerobic respiration?
- Explain the process which happen in our muscle cells?
- In which form our body used the energy?
- Why there is a faster breathing rate of aquatic animals then the terrestrial animals?
- Write the name of organ used for respiration by different organism- fish, frog?

(II) Picture-Based Question:-

Interpret and label the diagram on account of functions of respiratory system



(III) Assertions and Reasons Based Questions:

Following questions consist of two statements – Assertion (A) and Reason (R).

Answer these questions selecting the appropriate option given below:

- Both A and R are true and R is the correct explanation of A.
 - Both A and R are true but R is not the correct explanation of A.
 - A is true but R is false.
 - A is false but R is true.
- (i) **Assertion (A)** : Human heart is four-chambered.
Reason (R) : Vena cava is the only artery that supplies deoxygenated blood to the heart.

- (ii) **Assertion (A):** Diffusion does not meet high energy requirements of multi-cellular organisms
Reason (R) : Diffusion is a fast process but occurs at the surface of the body.
- (iii) **Assertion :** The plants store some of the waste products in their body parts.
Reason: Raphides are the solid waste products of plants.

(IV) Long Answer Type Questions:

- (i) Design an activity to show that CO₂ is produced during breathing.
(ii) What are the components of transport system in highly organized plants?

Social Science

HISTORY + SPL

1. Read the sources given below and answer the questions:

To the altar of this revolution, we have brought our youth as incense'. Many nationalists thought that the struggle against the British could not be won through non-violence. In 1928, the Hindustan Socialist Republican Army (HSRA) was founded at a meeting in Feroz Shah Kotla ground in Delhi. Amongst its leaders were Bhagat Singh, Jatin Das, and Ajoy Ghosh. In a series of dramatic actions in different parts of India, the HSRA targeted some of the symbols of British power. In April 1929, Bhagat Singh and Batukeshwar Dutt threw a bomb in the Legislative Assembly. In the same year, there was an attempt to blow up the train that Lord Irwin was traveling in. Bhagat Singh was tried and executed by the colonial government. During his trial, Bhagat Singh stated that he did not wish to glorify 'the cult of the bomb and pistol' but wanted a revolution in society 'Revolution is the inalienable right of mankind. Freedom is the imprescriptible birthright of all. The laborer is the real sustainer of society. To the altar of this revolution we have brought our youth as incense, for no sacrifice is too great for so magnificent a cause. We are content. We await the advent of the revolution. Inquilab Zindabad!

- i. Why Hindustan Socialist Republican Army was formed? With reference to the above context, infer the appropriate option.
(a) To fight against the British colonial rule with the principle of non-violence
(b) To fight against British colonial rule in India
(c) To achieve independence for the country through an armed rebellion
(d) Both (b) and (c)
- ii. Consider the following statements and find the incorrect from the given options.
I. Bhagat Singh and Batukeshwar Dutta threw a bomb in the Central Legislative Assembly.
II. Hindustan Socialist Republican Army was based on the principles given by Mahatma Gandhi.
- iii. Bhagat Singh wanted a revolution in the society.
Codes
(a) Only I (b) Only II
(c) Only III (d) Both II and III
- iv. What lesson does Bhagat Singh's life teach to modern-day India? Identify the correct option.
(a) He emphasized on socio-economic changes rather than changing political leaders.
(b) He inspired the masses to break social barriers of casteism.
(c) He taught people to shed away the fear of British rulers.
(d) All of the above

- v. The HSRA and Bhagat Singh focused on which section of the society to bring a revolution? Identify the correct option.
- (a) Labourers (b) Leaders
(c) Youth (d) Merchants
- vi. During whose tenure as the Viceroy of India were the great martyrs Bhagat Singh, Sukhdev and Rajguru hanged? Choose the best suitable option.
- (a) Lord Canning (b) Lord Irwin
(c) Lord Minto (d) Lord Curzon
- vii. Which of the following were the revolutionary activities of HSRA? Choose the correct option.
- (a) Central Assembly Bombing Case.
(b) An attempt to blow up the train that Lord Irwin was traveling in.
(c) Both (a) and (b)
(d) Involved in Lahore Conspiracy Case
2. In the following questions, the Assertions (A) and Reason(s) (R) have been put forward. Read both statements carefully and choose the correct answer from the below:
- (a) Both A and R are true and R is the correct explanation of A
(b) Both A and R are true, but R is not the correct explanation of A
(c) A is true, but R is false
(d) A is false, but R is true
- 2.1 Assertion (A): In Belgium, the leaders realized that the unity of the country is possible by respecting the feelings and interests of different countries.
Reason: Belgium favored the Dutch speaking community.
- 2.2 Assertion (A): Horizontal distribution of power allows different organs of the government placed at the same level to exercise different powers.
Reason(R): The separation ensures that different organs can exercise unlimited.
- 2.3 Assertion (A): Power sharing is good for democracy.
Reason (R): It helps to reduce the possibility of conflict between the social groups.
3. How did variety of cultural processes play an important role in making nationalism more effective in India. Explain with examples and paste some photographs related to the topics.

GEOGRAPHY

1. Read the sources given below and answer the questions:

Resources are vital for any developmental activity. But irrational consumption and overutilization of resources may lead to socio-economic and environmental problems. To overcome these problems, resource conservation at various levels is important. This had been the main concern of the leaders and thinkers in the past. For example, Gandhiji was very apt in voicing his concern about resource conservation in these words: "There is enough for everybody's need but not for anybody's greed." He placed the greedy and selfish individuals and exploitative nature of modern technology as the root cause for resource depletion at the global level. He was against mass production and wanted to replace it with the production by the masses.

- 1.1 What are the various norms of indiscriminate and over exploitation of resource.

1.2 Resources are vital for any developmental activity. Justify.

1.3 Suggest various major for reasonable and justify utilization of resources.

2. Activity based Questions.

Rohan visited his friend's house. There he had seen the red colour soil and also too much rain fall happening there.

- i. Mention any two properties of red soil.
- ii. Why the colour of the soil is red.
- iii. Is that soil good for cultivation? Give reasons.

3. Answer the following questions.

- i. Why is there a need to utilized the available land with care full planning?
- ii. 'Land is a resources of fundamental significance'. Justify.
- iii. Mention the relative significance of varied relief features of the land marks of our counties.
- iv. What is land use? Name the various factors affecting land use.

ECONOMICS

1. Data-Based Questions:

Read the given data and find out children of which state has attained maximum elementary school education?

States	Per Capita Income For 2018–19 (in Rs)	Infant Mortality Rate per 1,000 live births (2018)	Literacy Rate % 2017–18	Net Attendance Ratio (per 100 persons) secondary stage (age 14 and 15 years) 2017–18
HARYANA	2,36,147	30	82	61
KERALA	2,04,105	7	94	83
BIHAR	40,982	32	62	43

- a) Haryana
- b) Kerala
- c) Haryana and Kerala both
- d) Kerala

2. Assertion (A) and Reason based questions:

Directions: Mark the option which is most suitable :

- 2.1) Assertion (A) : There is a need to utilize resources in a judicious and sustainable manner.
Reason (R) : Non-renewable resources are those which will get exhausted after years of use.
- (a) Both A and R are true and R is the correct explanation of A.
 - (b) Both A and R are true but R is not the correct explanation of A.
 - (c) A is true but R is false.
 - (d) A is false but R is true.
- 2.2) Assertion (A) : The developmental goals that people have, are not only about better income but also about other important things in life.
Reason (R) : A safe and secure environment may allow more women to take up a variety of jobs or run a business.
- (a) Both A and R are true and R is the correct explanation of A.
 - (b) Both A and R are true but R is not the correct explanation of A.
 - (c) A is true but R is false.
 - (d) A is false but R is true.

3. **Read the sources given below and answer the questions:**

Read the source given below and answer the questions that follows:

For comparing countries, their income is considered to be one of the most important attributes. Countries with higher income are more developed than others with less income. This is based on the understanding that more income means more of all things that human beings need. Whatever people like, and should have, they will be able to get a greater income. So, greater income itself is considered to be one important goal. The income of the country is the income of all the residents of the country. This gives us the total income of the country. However, for comparison between countries, total income is not such a useful measure. Since countries have different population, comparing total income will not tell us what an average person is likely to earn. Are people in one country better off than others in a different country? Hence, we compare the average income which is the total income of the country divided by its total population.

The average income is also called per capita income.

In World Development Reports, brought out by the World Bank, this criterion is used in classifying countries. Countries with per capita income of US\$ 12,056 per annum and above in 2017, are called rich countries and those with per capita income of US\$ 955 or less are called low-income countries. India comes in the category of low middle income countries because its per capita income in 2017 was just US\$ 1820 per annum. The rich countries, excluding countries of Middle East and certain other small countries, are generally called developed countries.

Human Development Report published by UNDP compares countries based on the educational levels of the people, their health status and per capita income.

- 3.1. Which one of the following organisation compares the development of the countries on the basis of literacy rate, gross enrolment ratio and health status of their people.
a) UNDP b) UNO c) World Bank d) WTO
- 3.2. Which one of the following organisation compares the development of the countries on the basis of total income and per capita income
a) UNDP b) UNO c) World Bank d) WTO
- 3.3. Why UNDP criteria is so important? Explain with valid arguments.

"Think Critically"

NEP 2020 states that "Education must move towards less content, and more towards learning about how to think critically and solve problems, how to be creative and multidisciplinary, and how to innovate, adapt, and absorb new material in novel and changing fields."

4. How do you evaluate the above given statement regarding New Education Policy.

Picture -Based Questions:



5. Interpret the above picture and answer the following questions:

- i) What do you mean by heritage?
- ii) State the contribution of natural and cultural heritage for the promotion of tourism in our country.

6. What should be the developmental goal of displaced people after the construction of Narmada Valley Project? (Reference: Given below pictures)



7. Complete the below table.

TABLE 1.1 DEVELOPMENTAL GOALS OF DIFFERENT CATEGORIES OF PERSONS	
Category of Person	Developmental Goals / Aspirations
Landless rural labourers	More days of work and better wages; local school is able to provide quality education for their children; there is no social discrimination and they too can become leaders in the village.
Prosperous farmers from Punjab	Assured a high family income through higher support prices for their crops and through hardworking and cheap labourers; they should be able to settle their children abroad.
Farmers who depend only on rain for growing crops	
A rural woman from a land owning family	
Urban unemployed youth	
A boy from a rich urban family	
A girl from a rich urban family	She gets as much freedom as her brother and is able to decide what she wants to do in life. She is able to pursue her studies abroad.
An <i>adivasi</i> from Narmada valley	

SECTION: A (Assertion and Reason Type Question)

In the questions given below, there are two statements marked as Assertion (A) and Reason(R). Read the statements and choose the correct option.

- a. Both(A) and (R) are true is correct explanation of (A)
 - b. Both (A) and (R) are true. But (R) is not correct explanation of (A).
 - c. (A) is true but (R) is false
 - d. (A) is false but (R) is true.
-
1. Assertion (A): While working on long documents, styles allow us to format our document quickly, keeping the formatting consistent.
Reason (R): The styles group is located on file menu and contains a set of quick styles.

 2. Assertion (A): The data source file contains the information to be merged into a document such as the name, address, city, mobile number and much more that we want to use in a mail merge.
Reason(R): The procedure of combining the main document with the data source is called formatting, and the final document after merging is called the formatting document.

 3. Assertion (A): The mail merge task pane first asks us to specify the type of main document we will use for the mail merge.
Reason(R): Drawing objects are built-in graphics in MS Word. We can add a variety of objects to the document, including arrows, callouts, squares, stars and flowchart shapes.

SECTION: B (Long Type Question)

4. What are templates? What are the advantages of using templates?

5. Tanmay is a Class X student. He has learn Mail Merge option of a Word Processor in his computer period. But he is confused with few terms used to merge documents. Explain the following briefly, which will help Tanmay better understand the Mail Merge options.
 - a. Merge Field
 - b. Data Source
 - c. Main Document
 - d. Mention two types of data on which mail merge can be applied.

SECTION: C (case study-based Questions)

PROJECT ACTIVITY:1

1. Create a table of Contents for your Project on “Cloud Computing”.
2. Create a document of minimum 10 pages in Word or OO Writer on the given topic. Format a document with various fonts (minimum 12, maximum 15) and margins (minimum 2, maximum 4).
The documents should include:
 - A bulleted or numbered list
 - A table containing relevant details
 - A picture of lion using gallery
 - A header with student name and date
 - A footer with pagination
 - Resize the picture to fit your documents

PROJECT ACTIVITY:2

(A) Creating a formal invite using Mail Merge

1. Type a letter inviting friends and / or Family to a party you are hosting. For Example, you can host a birthday, graduation, end -of- school or Independence Day Party. You pick the event. Your letter will serve as your form letter. Save your letter as Mail Merge Letter.
2. Format the letter as left aligned (Block letter) with 0.5” or 1” margin depending on the length.
3. Make sure your address is listed at the top of the document. Then insert two blank lines and put the date in the month/date/year format. Then enter four blank lines and leave space for your merge fields.

Example:

Title First Name, Last Name

Address 1

Address 2

City,PIN

(Eventually, you will be entering your merge fields to replace this information.)

4. Create a data source with names and addresses of at least five families/friends to whom you wish to mail the letters. Create fields such as Title, First Name, Last Name, Address1, Address2, city, State and PIN or make appropriate field names of your choice but make sure you include the address information. Save your data source as Mail Merge data.
5. Now return to your main document (Mail Merge Letter) and set it as the form document and identify your data source.
6. Enter your merge fields into your main document. Merge fields should be used for the recipient’s address.
7. After your merge fields are entered, merge the document and save it. Save the merged document as Mail Merge.
8. Create envelopes inserting your merge fields for the recipient’s name and address. Save the merged envelopes as Mail Merge Envelopes.
Print your form letter, One merged letter and one envelope.

